

This manual provides instructions for safe installation of the *InterLock* Kit onto a California Ranch Style meter-main. The back plate sits securely on the face of the panel cover while allowing the front plate to slide between the main and generator breaker positions. The *InterLock* Kit will only allow one of these breakers to be in the “ON” position meeting the requirements of Article 702 of the National Electric Code ANSI/NFPA 70.

SAFETY PRECAUTIONS – IMPORTANT SAFETY INSTRUCTIONS

WARNING: HAZARD OF ELECTRIC SHOCK OR EXPLOSION

- This kit must be installed and serviced only by qualified electrical personnel
- Turn off all power supplying the equipment where this kit will be installed before working on or inside the equipment
- Always use a properly rated voltage sensing device to confirm that all power is off
- Replace all devices, doors, and covers after installing this kit before turning on power to the equipment
- Always wear safety eyewear while drilling or working around electrical equipment

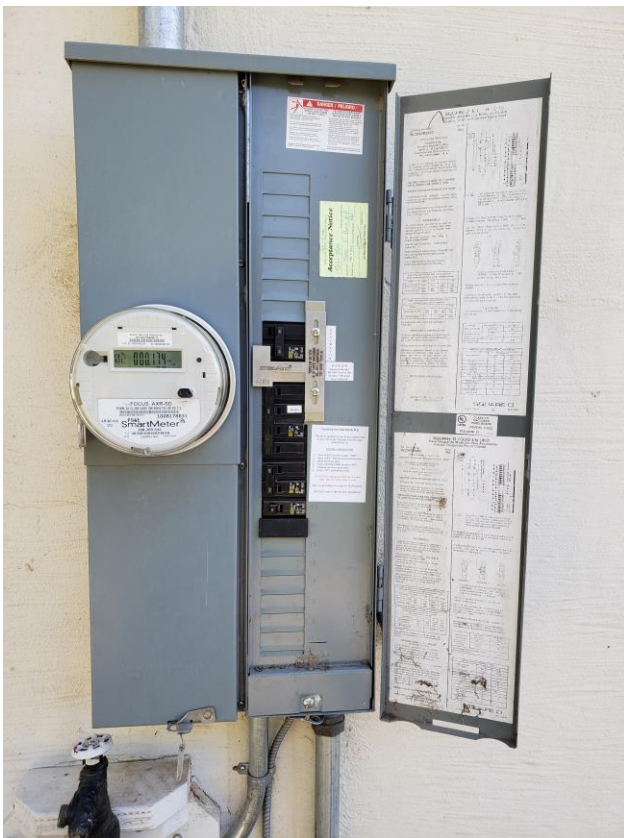
FAILURE TO FOLLOW THESE INSTRUCTIONS CAN RESULT IN SERIOUS INJURY OR DEATH

SAVE THESE INSTRUCTIONS

INSTALLATION INSTRUCTIONS

- 1) Disconnect power to the panel
- 2) Separate plates. Remove backing from the double stick tape. Align back plate (P-11) with the top of the breaker slot above the main and the center of the main breaker on the front of panel cover. (Do not drill holes at this time)
- 3) Remove panel cover
- 4) Relocate breakers from the three slots directly above the main breaker with one space being left blank for the cross bar of the back plate, utilizing piggyback breakers as necessary to create the needed spaces.
- 5) Install generator breaker in the vacated slots above the blank space
- 6) On suitable surface use included 11/64 drill bit (H-15) to drill holes in the panel cover through the predrilled holes on the back plate (P-11)
- 7) Use file to smooth surface around holes and remove the burrs on back of panel cover. **On the back of the panel cover file away paint to allow entire screw head to sit with metal to metal contact.** The binder screws (H-14) must sit flush with the back of the panel cover

- 8) Insert binder screws (H-14) through the back of the panel cover, back plate (P-11), and front plate (P-12). Use the binder post (H-13) to attach to front of binder screws (H-14). Handhold binder post (H-13) while using screwdriver to tighten the binder screws (H-14). The front plate should slide easily and the back plate should sit firmly. Be careful not to over-tighten.
- 9) Set generator and main breakers in the "OFF" position and reattach panel cover.
- 10) With the panel cover firmly in place test the *InterLock* to make sure that it transfers easily between positions. **BOTH BREAKERS SHOULD NOT BE ABLE TO BE IN THE "ON" POSITION AT THE SAME TIME.** Even with moderate pressure you should not be able to engage both breakers at once.
- 11) Apply thread lock (H-16) to all three binder posts (H-13) as per instructions included with the thread lock
- 12) Attach labels (Danger label must be placed **ON** Generator Breaker)
- 13) Reconnect power to the panel
- 14) Temporarily remove breakers from the 3 spots above/below the main breaker (position depends on placement of generator breaker). Loop the breaker retaining strap (S-04) around breakers from the front face of the breakers. Align the head of the retaining strap at the top right of the breaker and tighten the strap. Cut the tail of the retaining strap approximately 2 inches long and install Notice Label (S-05) around tail. Reinstall the breakers. Verify that the retaining strap keeps the generator breaker in place by attempting to remove the breaker.



<u>KIT CONTENTS</u>			<u>TOOLS NEEDED TO INSTALL</u>
Description	Quantity	Part #	<ul style="list-style-type: none"> - Drill or cordless drill - Flathead screwdriver - Metal file - Accurate voltage sensor <p><u>CONTACTING US</u></p> <p>You can contact us by phone at (804) 726-2448 or by fax at (804) 231-1984</p> <p>Questions or comments: questions@interlockkit.com</p>
Back plate	1	P-1610	
Front plate	1	P-1610	
Binder post	3	H-13	
Binder screw	3	H-14	
Drill bit 11/64	1	H-15	
Thread lock pipette	1	H-16	
Instruction booklet	1	W-17	
Main label	1	W-18	
DANGER label	1	W-19	
Generator label	1	W-20	
Instructions label	1	W-21	
Breaker retaining strap	1	S-04	
Notice Label	1	S-05	

<u>OPERATION INSTRUCTIONS</u>	<u>STATEMENT OF LIABILITY</u>
<p>TO SWITCH OPERATION FROM MAIN TO GENERATOR</p> <ol style="list-style-type: none"> 1) Turn main breaker to the “OFF” position 2) Turn all branch circuits to the “OFF” position 3) Slide <i>InterLock</i> plate up 4) Connect and start generator 5) Turn generator breaker to the “ON” position 6) Turn on essential circuits one at a time WARNING: Allow appliances to start before engaging next circuit <p>TO RETURN TO MAIN POWER REVERSE PROCEDURE</p>	<p>Electrical equipment should be installed, operated, serviced, and maintained by qualified personnel. No responsibility is assumed by Generator InterLock Technologies, LLC for any consequences arising out of the misuse of this material.</p> <div style="border: 1px solid black; padding: 10px; text-align: center; margin-top: 20px;"> <p>Tested for use with UL 67 Listed Panelboards Ref. Wyle Laboratories Test Report T52431-01</p> </div>